

PILOT BRIEFING INFORMATION

USE (NAMED AIRPORT) ALTIMETER SETTING.
LIMIT FINAL AND MISSED APPROACH
AIRSPEED TO 70 KIAS.

PROCEED VISUALLY FROM DYUGA OR
CONDUCT THE SPECIFIED MISSED
APPROACH.

A/N/A REQUEST HELIPORT LIGHTS (FREQUENCY)
T

COPTER RNAV (GPS) 192

MEDICAL CENTER (ID)
(CITY), (STATE)

AWOS-3
(FREQUENCY)

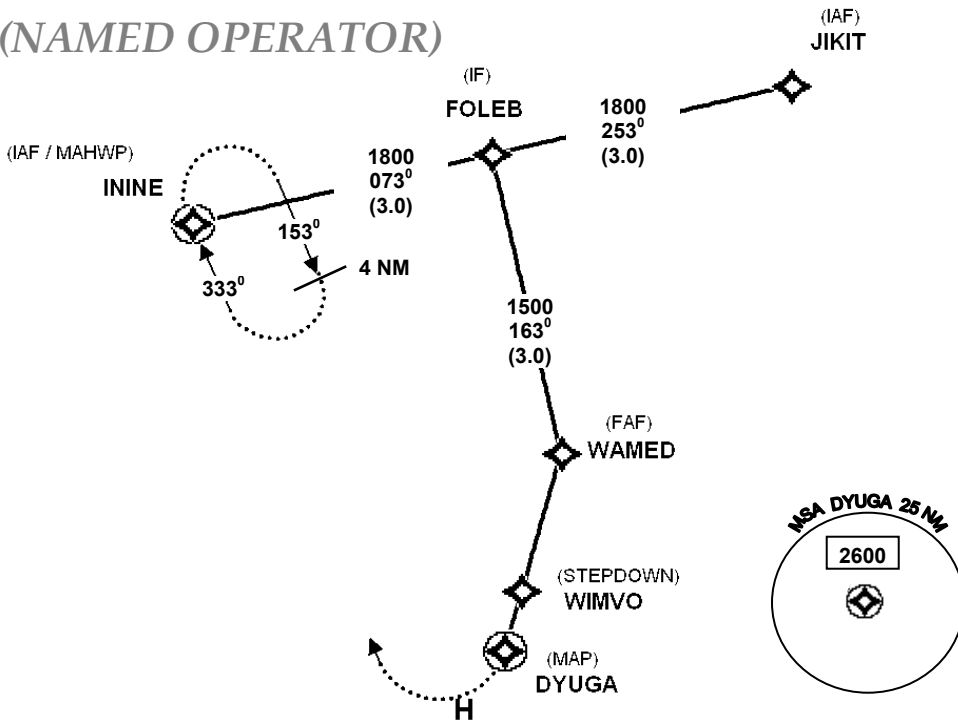
MISSED APPROACH: CLIMBING
RIGHT TURN to 2100 DIRECT
ININE and HOLD

SPECIAL INSTRUCTIONS
VISUAL SEGMENT DESCENT PLANNED TO 10
FOOT HOVER. TERMINATE AT 10 FOOT HOVER

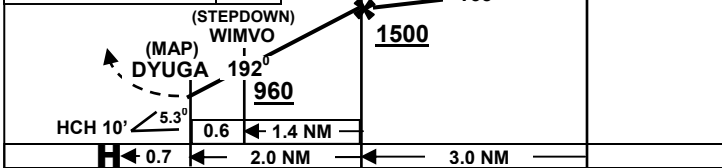
(NAMED) APPROACH
CONTROL (FREQUENCY)

FLIGHT DISPATCH
(FREQUENCY)

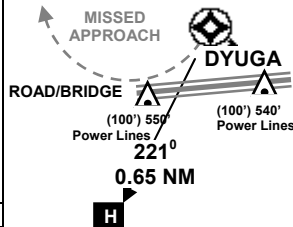
**USE RESTRICTED TO
(NAMED OPERATOR)**



ROD: WPT to WPT / GS	FT/MIN
FOLEB to WAMED / 90 KT	150
WAMED to WIMVO / 70 KT	450
WIMVO to DYUGA / 70 KT	190
WAMED to DYUGA / 70 KT	370



ELEV 485



PROCEED VISUALLY FROM DYUGA
TO LANDING and TERMINATE
APPROACH AT 10 FOOT HOVER

CATEGORY		COPTER		
LNAV	MDA	860 - 3/4	375	(400 - 3/4)

(Original) (Date)

32° 55.04'N - 96° 30.51'W

(CITY), (STATE)

By: Hickok & Associates, Inc.
All rights reserved

MEDICAL CENTER (ID) HELIPORT

(SPECIAL) COPTER RNAV (GPS) 192