

PILOT BRIEFING INFORMATION

USE (NAMED) AIRPORT ALTIMETER SETTING

PRIOR TO TAKEOFF

1. PERFORM RAIM PREDICTION
2. SET CDI TO 0.3 NM
3. COUPLE LATERAL DEVIATION TO FLT DIRECTOR ROLL COMMAND BAR OR AUTOPILOT AXIS
4. VERIFY GPS PRESENT POSITION
5. VERIFY WPT NAMES AND ROUTE SEQUENCE

AFTER TAKEOFF

1. MAINTAIN VMC TO THE IDF
2. ACCELERATE TO V_{mini} AND CLIMB TO IDF CROSSING ALTITUDE PRIOR TO ENTERING IMC
3. MAXIMUM AIRSPEED 70 KIAS TO WPT2
4. AFTER PASSING WPT2 CDI MAY BE SET TO 1.0 NM
5. AFTER WPT3 FOLLOW ATC CLNC/INSTRUCTIONS

COPTER RNAV (GPS) 012

DEPARTURE (PILOT NAV)

MEDICAL CENTER (ID)

(CITY), (STATE)

OBSTACLE CLEARANCE BASED ON MINIMUM CLIMB GRADIENT TO CROSS IDF AND WPTS AT MINIMUM CROSSING ALTITUDES. SPECIAL AIRCREW TRAINING REQUIRED

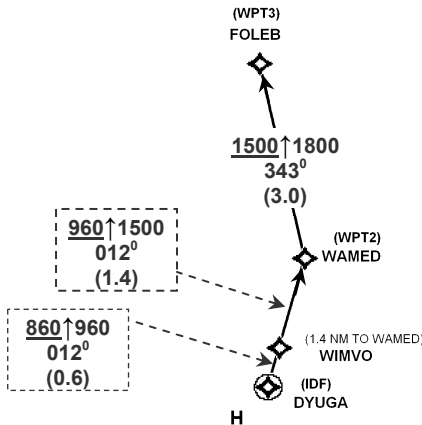
CONTACT (NAMED ATC) FOR DEPARTURE CLEARANCE

ASOS (FREQUENCY)

(NAMED) APP CONTROL (FREQUENCY)

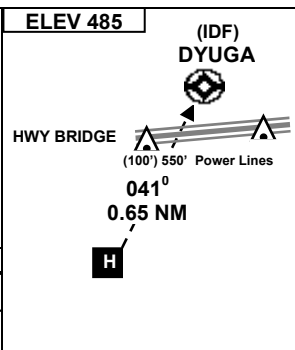
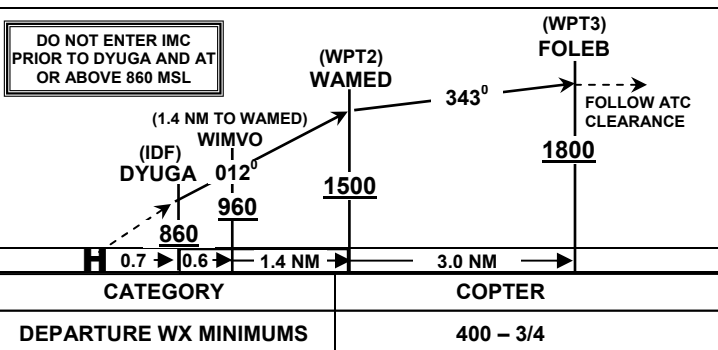
FLIGHT DISPATCH (FREQUENCY)

USE RESTRICTED TO (NAMED OPERATOR)



SEGMENT	Required Climb ft/nm	Required (MINIMUM) Climb ft/min at Ground Speed (Knots)							
		50	60	70	80	90	100	110	120
Heliport to DYUGA	577	481	577	673	Best Climb to 70 KIAS Maximum				
DYUGA to WIMVO	164	137	164	191	70 KIAS Maximum				
WIMVO to WAMED	388	324	388	453	70 KIAS Maximum				
WAMED to FOLEB	100	83	100	117	133	150	90 KIAS Maximum		

DO NOT ENTER IMC PRIOR TO DYUGA AND AT OR ABOVE 860 MSL



(Original) (Date) 32° 55.04'N - 96° 30.51'W (CITY), (STATE)
 By: Hickok & Associates, Inc.
 All rights reserved
MEDICAL CENTER (ID) HELIPORT
COPTER RNAV (GPS) 012 DEPARTURE (PILOT NAV)