

PILOT BRIEFING INFORMATION

USE (NAMED) AIRPORT ALTIMETER SETTING

PRIOR TO TAKEOFF

1. PERFORM RAIM PREDICTION
2. SET CDI TO 0.3 NM
3. COUPLE LATERAL DEVIATION TO FLT DIRECTOR ROLL COMMAND BAR OR AUTOPILOT AXIS
4. VERIFY GPS PRESENT POSITION
5. VERIFY WPT NAMES AND ROUTE SEQUENCE

AFTER TAKEOFF

1. MAINTAIN VMC TO THE IDF
2. ACCELERATE TO V_{mini} AND CLIMB TO IDF CROSSING ALTITUDE PRIOR TO ENTERING IMC
3. MAXIMUM AIRSPEED 70 KIAS TO WPT2
4. AFTER PASSING WPT2 CDI MAY BE SET TO 1.0 NM
5. AFTER WPT3 FOLLOW ATC CLNC/INSTRUCTIONS

COPTER RNAV (GPS) 124

DEPARTURE (PILOT NAV)

MEMORIAL HOSPITAL (ID)
(CITY), (STATE)

OBSTACLE CLEARANCE BASED ON MINIMUM CLIMB GRADIENT TO CROSS IDF AND WPTS AT MINIMUM CROSSING ALTITUDES. SPECIAL AIRCREW TRAINING REQUIRED

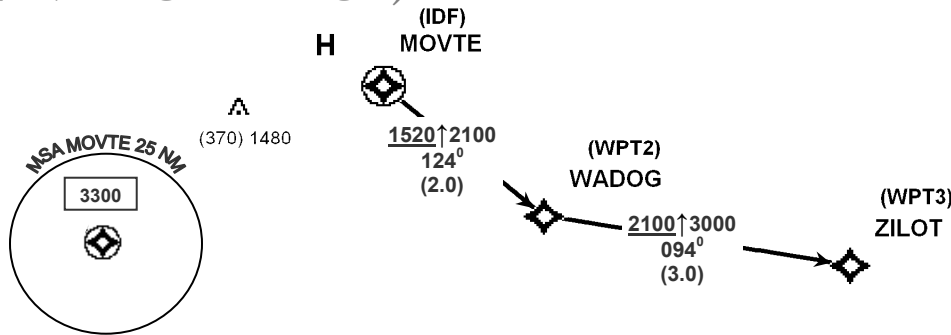
CONTACT (NAMED ATC) FOR DEPARTURE CLEARANCE

ASOS (FREQUENCY)

(NAMED) APP CONTROL (FREQUENCY)

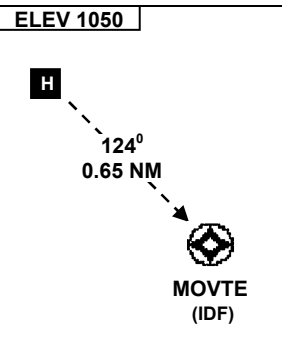
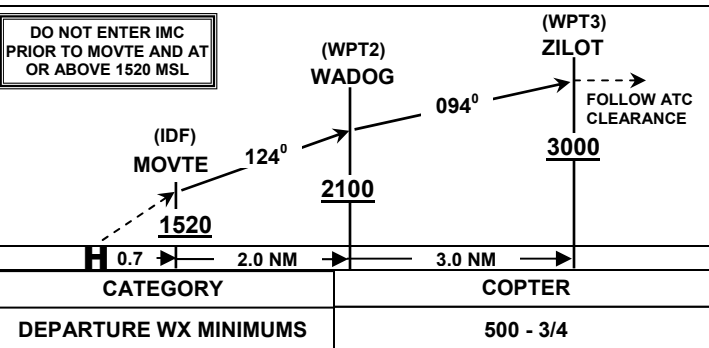
FLIGHT DISPATCH (FREQUENCY)

USE RESTRICTED TO (NAMED OPERATOR)



SEGMENT	Required Climb ft/nm	Required (MINIMUM) Climb ft/min at Ground Speed (Knots)							
		50	60	70	80	90	100	110	120
Heliport to MOVTE	723	603	723	844	Best Climb to 70 KIAS Maximum				
MOVTE to WADOG	290	242	290	338	70 KIAS Maximum				
WADOG to ZILOT	300	250	300	350	400	450	90 KIAS Maximum		

DO NOT ENTER IMC PRIOR TO MOVTE AND AT OR ABOVE 1520 MSL



(Original) (Date)

32° 44.88'N - 97° 47.05'W

(CITY), (STATE)

By: Hickok & Associates, Inc.
All rights reserved

MEMORIAL HOSPITAL (ID) HELIPORT

COPTER RNAV (GPS) 124 DEPARTURE (PILOT NAV)